

# Human/Cynomolgus/Rhesus macaque Ephrin-A3/EFNA3 Protein

Cat. No. EFN-HM2A3

## Description

<b>Source</b>	Recombinant Human/Cynomolgus/Rhesus macaque Ephrin-A3/EFNA3 Protein is expressed from HEK293 with hFc tag at the C-Terminus. It contains Gln23-Ser213.
<b>Accession</b>	P52797-1(Human) / A0A2K5VZR7(Cynomolgus) / NP_001252612.1(Rhesus macaque)
<b>Molecular Weight</b>	The protein has a predicted MW of 41.8 kDa. Due to glycosylation, the protein migrates to 60-70 kDa based on Bis-Tris PAGE result.
<b>Endotoxin</b>	Less than 1EU per µg by the LAL method.
<b>Purity</b>	> 95% as determined by Bis-Tris PAGE > 95% as determined by HPLC

## Formulation and Storage

<b>Formulation</b>	Lyophilized from 0.22µm filtered solution in PBS (pH 7.4). Normally 8% trehalose is added as protectant before lyophilization.
<b>Reconstitution</b>	Centrifuge the tube before opening. Reconstituting to a concentration more than 100 µg/ml is recommended. Dissolve the lyophilized protein in distilled water.
<b>Storage</b>	-20 to -80°C for 12 months as supplied from date of receipt. -80°C for 3 months after reconstitution. Recommend to aliquot the protein into smaller quantities for optimal storage. Please minimize freeze-thaw cycles.

## Background

Interaction of Eph receptor tyrosine kinases with their membrane bound ephrin ligands initiates bidirectional signaling events that regulate cell migratory and adhesive behavior. Whole-mount in situ hybridization revealed overlapping expression of the Epha1 receptor and its high-affinity ligands ephrin A1 (Efna1) and ephrin A3 (Efna3) in the primitive streak and the posterior paraxial mesoderm during early mouse development.

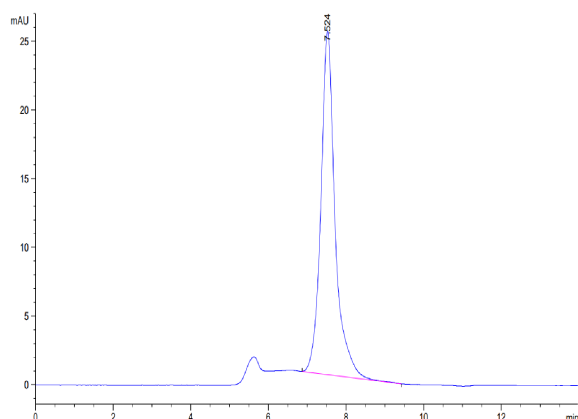
## Assay Data

### Bis-Tris PAGE



Human/Cynomolgus/Rhesus macaque Ephrin-A3 on Bis-Tris PAGE under reduced condition. The purity is greater than 95%.

### SEC-HPLC

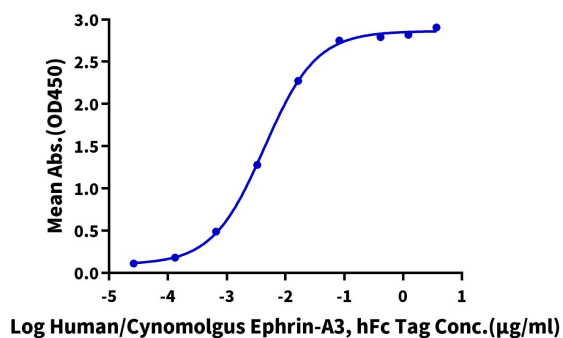


The purity of Human/Cynomolgus/Rhesus macaque Ephrin-A3 is greater than 95% as determined by SEC-HPLC.

Assay Data

ELISA Data

**Human/Cynomolgus Ephrin-A3, hFc Tag ELISA**  
0.5µg Human EPHA10, His Tag Per Well



Immobilized Human EPHA10, His Tag at 5µg/ml (100µl/well) on the plate. Dose response curve for Human/Cynomolgus/Rhesus macaque Ephrin-A3, hFc Tag with the EC50 of 4.4ng/ml determined by ELISA (QC Test).